
StresStimulus v4.6

Getting Started



TABLE OF CONTENTS

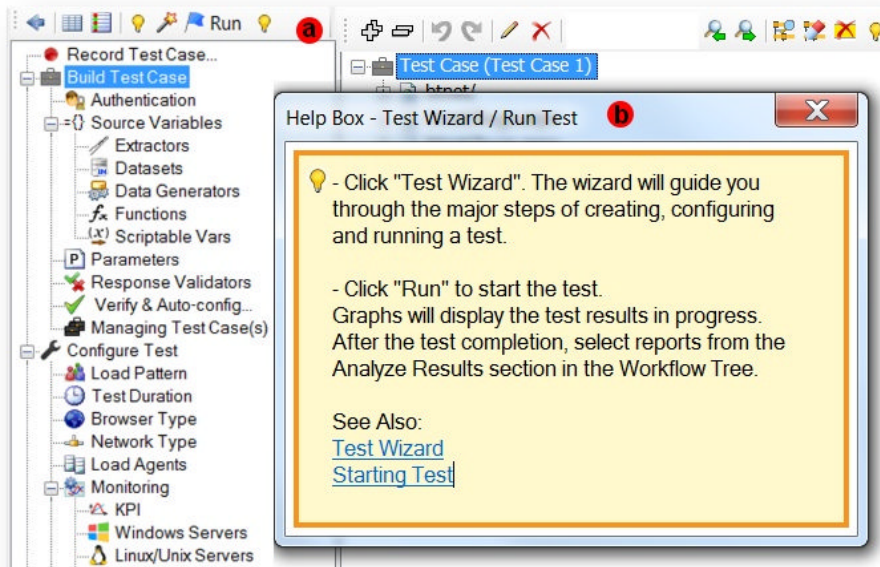
1	Getting Help	3
2	Your First Test	7
2.1	Recording Test Case.....	7
2.2	Configuring Test Case	12
2.3	Configuring Test.....	14
2.4	Running Test	19
2.5	Analyzing Results.....	22

StresStimulus is [a tool for load, stress and performance testing of websites](#), web services, web and mobile applications.

This Getting Started guide will walk you through your first StresStimulus load test from the beginning to the end.

1 GETTING HELP

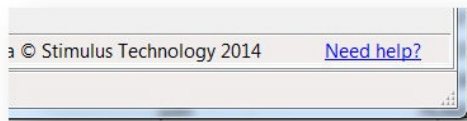
To get help with any user interface element, click a nearby yellow light bulb icon (a). A help box (b) will appear. Along with a short description of the controls, it will provide links to the proper section of this online guide with relevant information.



Help Box Tips:

1.
 - a. If you want to close the help box, just move the mouse outside the box, and it will disappear in 2 seconds.
 - b. Help box content is selectable. To further research the help box topic, copy keywords from the help box and paste them in the search box of this online guide.

Anytime you have a question, click the **Need help?** link which is located in the bottom right.



Your personalized support page will open. It contains link to various support resources and support tools.

My Support

Q

[Email support@stimulustech.com](mailto:support@stimulustech.com) 4

...or to create an email with your version and serial number, in StresStimulus main menu, Support Options, click "Email Support".

[Support Community](#) 5

- [Support Questions](#)
- [Bugs & Issues](#) 1
- [Suggestions & Feature Requests](#)
- [Best Practices](#)
- [News and Announcements](#)

[Submit a question, suggestion or issue](#) 2

Phone Support +1 (732) 637-8100 6

CALL US
 CLICK HERE
Phone.com

Premium Support hours: M-F 6 AM-6 PM ET
Standard Support hours: M-F 9 AM-5 PM ET

Check my support status

3 [check](#)

License: *Full license-5000 Ent*
 Support: *Premium, expires 7/23/2015*

Premium Support Options:

Inspect my Test 8

In the StresStimulus menu -Support Options, click "Inspect my Test" [more](#)

Click-to-schedule support conference 7

Book a web conference with support at convenient time.
[more](#)

Click! to SCHEDULE

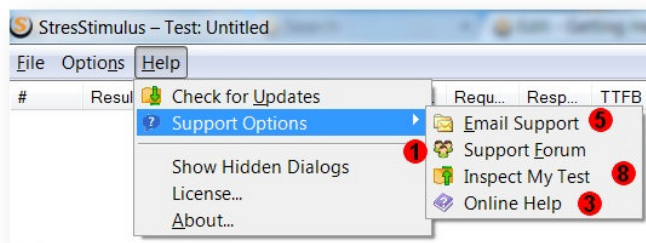
Resources:

[Online Help](#) 3

["Getting Started" Video](#) (3 minutes)

Some of these resources and tools are also available in StresStimulus Main Menu > **Support Options:**

GETTING HELP - RECORDING TEST CASE 4



1. **Support Forum:** visit [StresStimulus support forum](#) to read dozens of blogs, answers and best practice tips. [Join](#) the StresStimulus support community to ask questions and receive a personal answer from one of our load testing experts.
2. **Submit a question:** allows to submit a question without registration.
3. **On-line Help:** links to this support site <http://support.stresstimulus.com>
4. **Consolidated Search:** allows to search StresStimulus help, forums and blogs from a single box.
5. **Email support:** support@stimulustechnology.com
6. **Phone Support:** +1 (732) 637-8100
7. **Click-to-schedule support conference.** Select your time zone and choose a time slot that works best for you, from 2 hours to 7-days in advance.
8. **Inspect my Test:** Available from StresStimulus Help menu. This support tool allows you to upload the current test to Stimulus Technology's secure repository for our support review. To upload a support case, click **Support Options** in the StresStimulus menu and then select **Upload Support Case**. If you wish to submit the first test result opened in the leftmost result tab, in the appeared message box, check the appropriate box. After clicking **Upload Test**, the test elements will be stored on your hard drive and then automatically uploaded to the Stimulus Technology's secure repository using SSL encryption. Your StresStimulus serial number identifying your contact information will be included as well. During the upload, a test upload icon will be displayed in the Windows notification area (tray). StresStimulus support personnel will be in touch with you after receiving your test.

Tip: If you cannot open a test case that you wish to upload because it is corrupted, follow these steps:

1. Launch StresStimulus
2. Click **Upload Support Case**. You will be prompted to enter a test .ssconfig file.
3. Enter the corrupted test configuration file and click **Upload Test**.

StresStimulus will upload your test without opening.

2 YOUR FIRST TEST

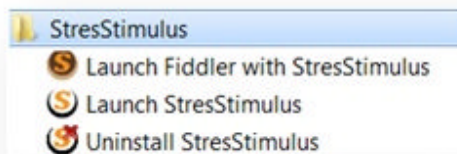
As you are learning StresStimulus, it is recommended to use the Test Wizard. It will guide you through all steps of the test from start to completion.

The Test Wizard helps to quickly learn the major steps of recording, configuring, running the test and going through some major results.

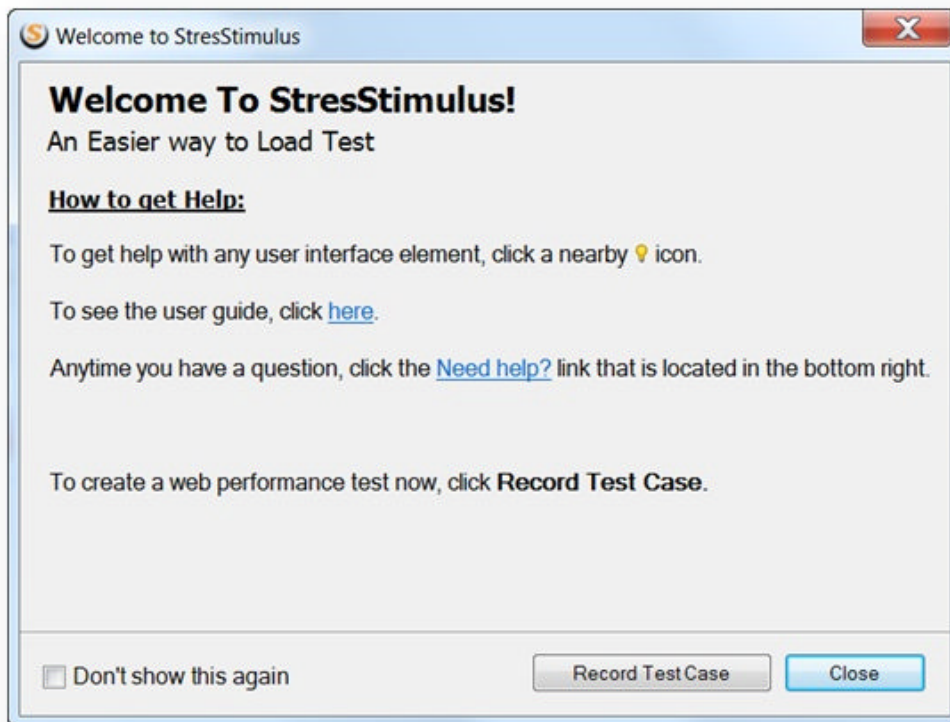
2.1 Recording Test Case

1. To start the standalone version of StresStimulus, click the **Start** button and then click **Launch StresStimulus**.

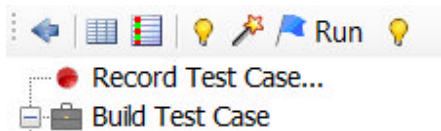
If you installed Fiddler and the StresStimulus add-on, you can also start the add-on version of StresStimulus by clicking **Launch Fiddler with StresStimulus**.



The welcome message box appears.



2. Click **Record Test Case**. Alternatively, click **Record Test Case** on the Workflow Tree.

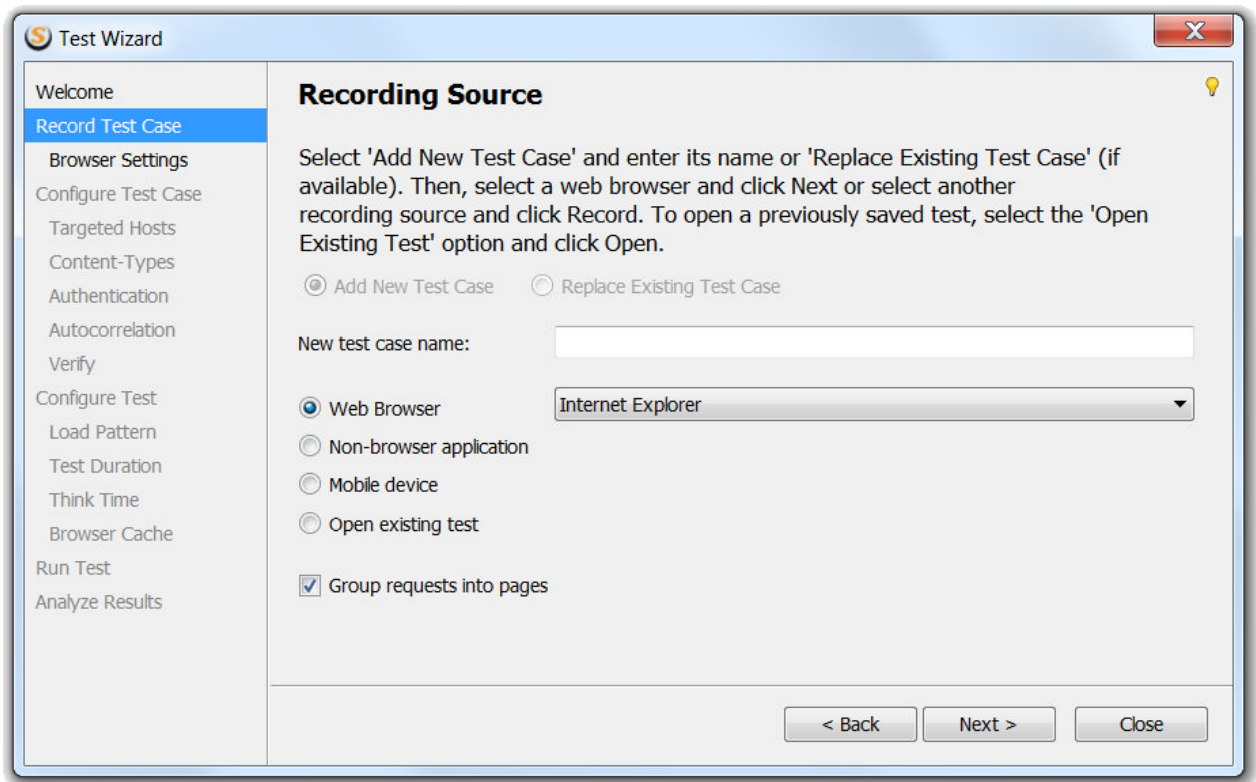


Tip: Some of the dialogs, which display information helpful to new users may have a **Do not show again** check-box. Check this box to prevent such dialogs from being displayed in the future. To revert this and start displaying all hidden dialogs again, Click **Show Hidden Dialogs** in StresStimulus main menu.

Test Wizard starts.

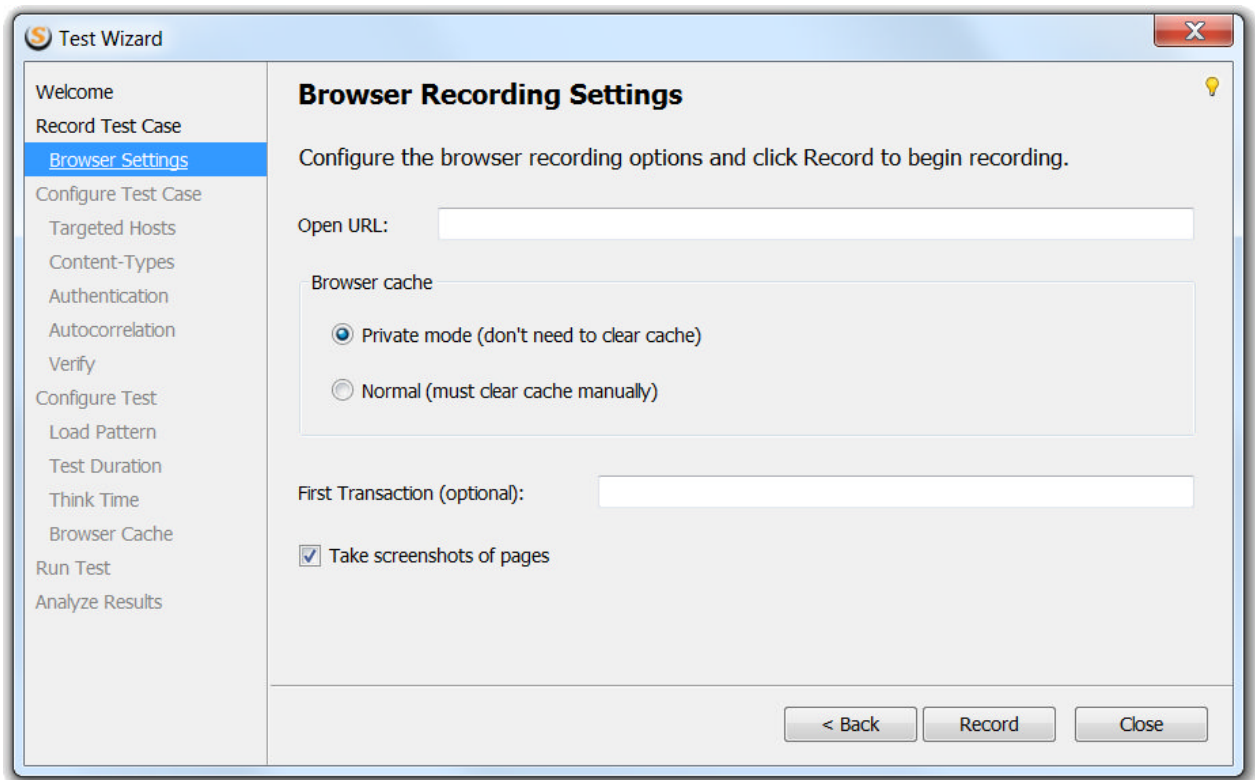


3. Click **Next** to show the **Recording Source** step of the wizard. Enter a new test case name.

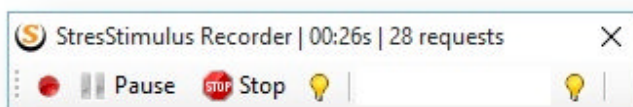


From the list of web browsers installed on your machine in the drop-down, select a web browser that you wish to use and click **Next**.

4. On the appeared **Browser Recording Settings** step, enter initial URL, the first transaction name (optional) and click **Record**. A dialog may appear giving further instructions specific to each recording source.



5. The floating **Recorder** bar will appear and IE will start. Navigate to the tested website and click through an application scenario that you want to test. Captured sessions in the StresStimulus session grid (in the standalone version) or in the Fiddler grid (in the add-on version).

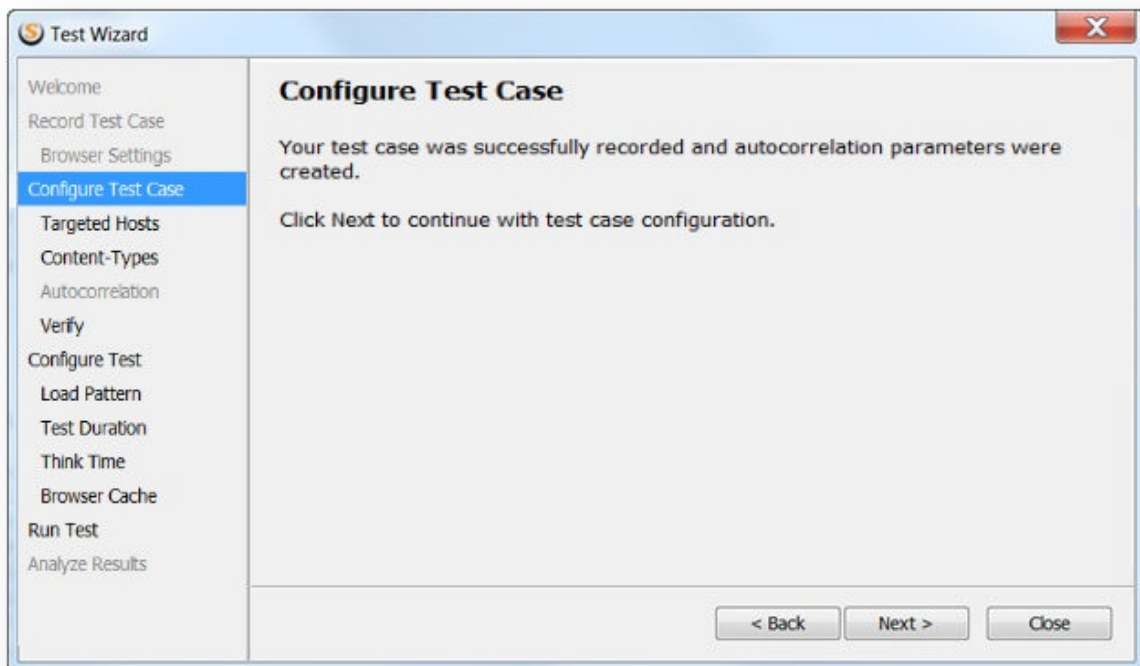


6. When recording is finished, click **Stop** in the **Recorder** or in StresStimulus. The **Recorder** will close IE. A new test case is created this point. If you are using another browser, just close the browser to stop recording.

Info: for more information about recording a test case, see [Recording Test Case](#)

2.2 Configuring Test Case

1. After recording is complete, the **Test Wizard** will reappear displaying the **Configure Test Case** dialog. Click **Next**.

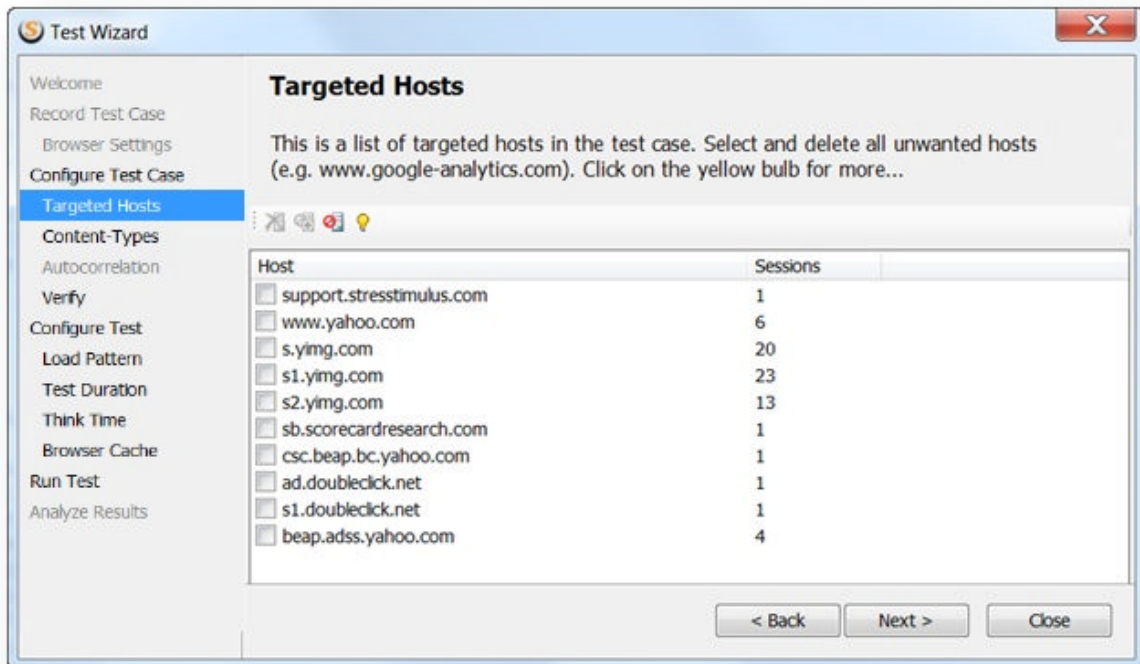


Tip: You can rerun the post recording steps at later time by clicking **Test Wizard** on the Test Case Tree toolbar.

Note: The set of wizard steps in your test case may be slightly different from this guide, because the Test Wizard presents configuration steps relevant to your test case. For example, if your web application uses server authentication, the wizard will present the authentication configuration step.

2. The **Targeted Hosts** dialog will appear. Look through the recorded hosts and delete all unnecessary ones (such as Google Analytics).

When complete, click **Next**.



For more details about Test Duration, see [Purging requests to unwanted hosts](#)

3. The **Verify Test Case** dialog will appear. Click **Next** to Verify the test case and make sure it is free from configuration errors.

The **Verify** step verifies if the test case is correctly configured.

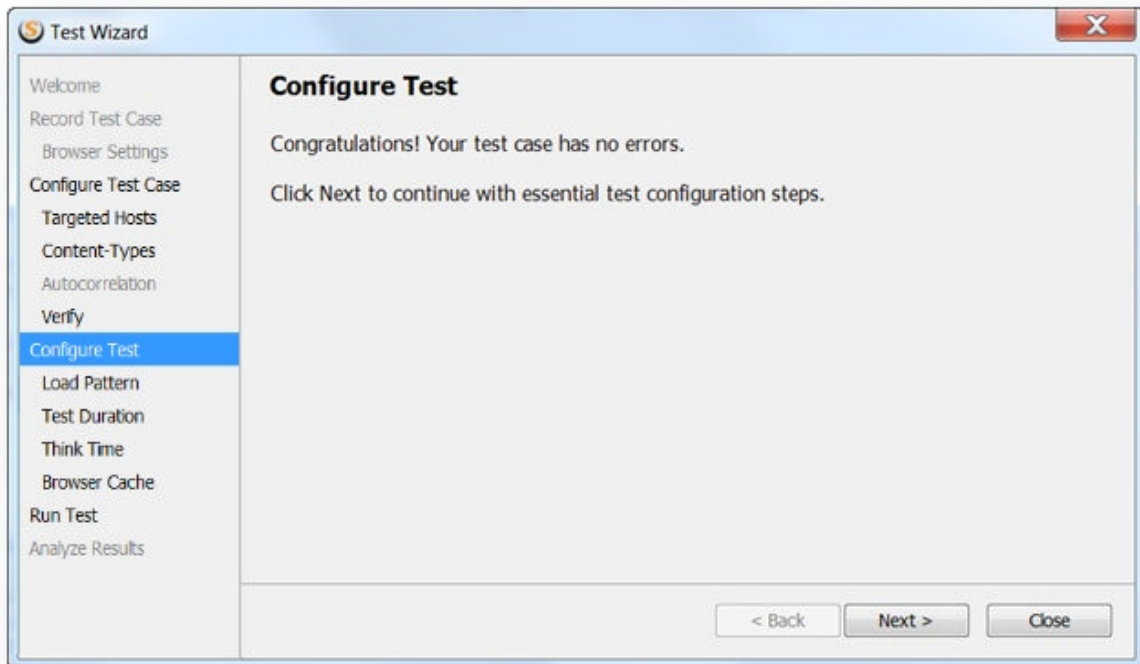


For more details about Verifying Test Cases, see [Verifying Test Case](#)

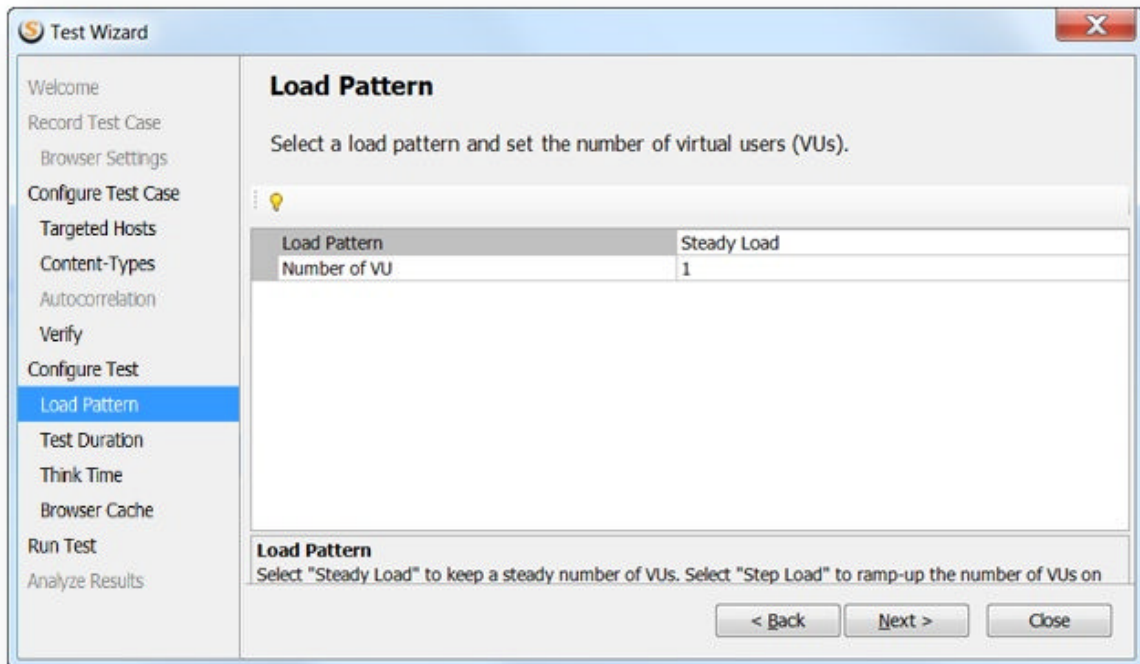
2.3 Configuring Test

1. After you verified the test case, the next step is to set up the test.

Tip: Sometimes the verify process finds some errors and/or warnings. They can be addressed using Parameter Finder and parameterization tool. For more info see [Resolving Errors and Warnings](#).

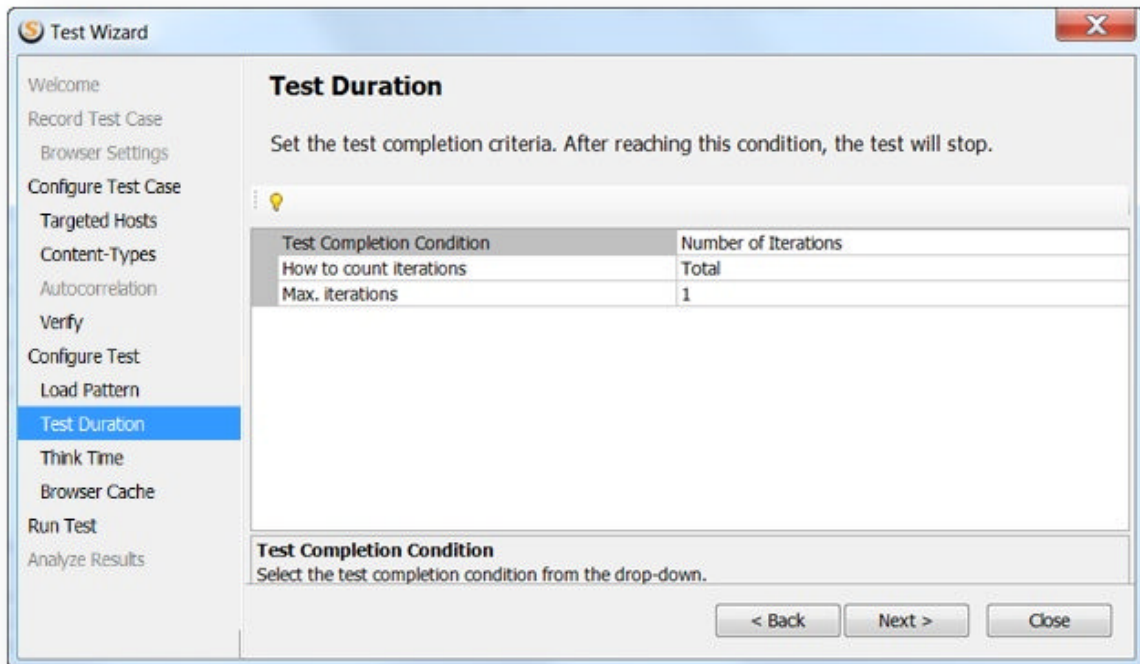


2. Select a load pattern and set the number of virtual users (VUs). You can either choose Steady Load (constant number of VUs) or Step Load (the VUs will increase over time). For more info on click [here](#). Click **Next** when finished.



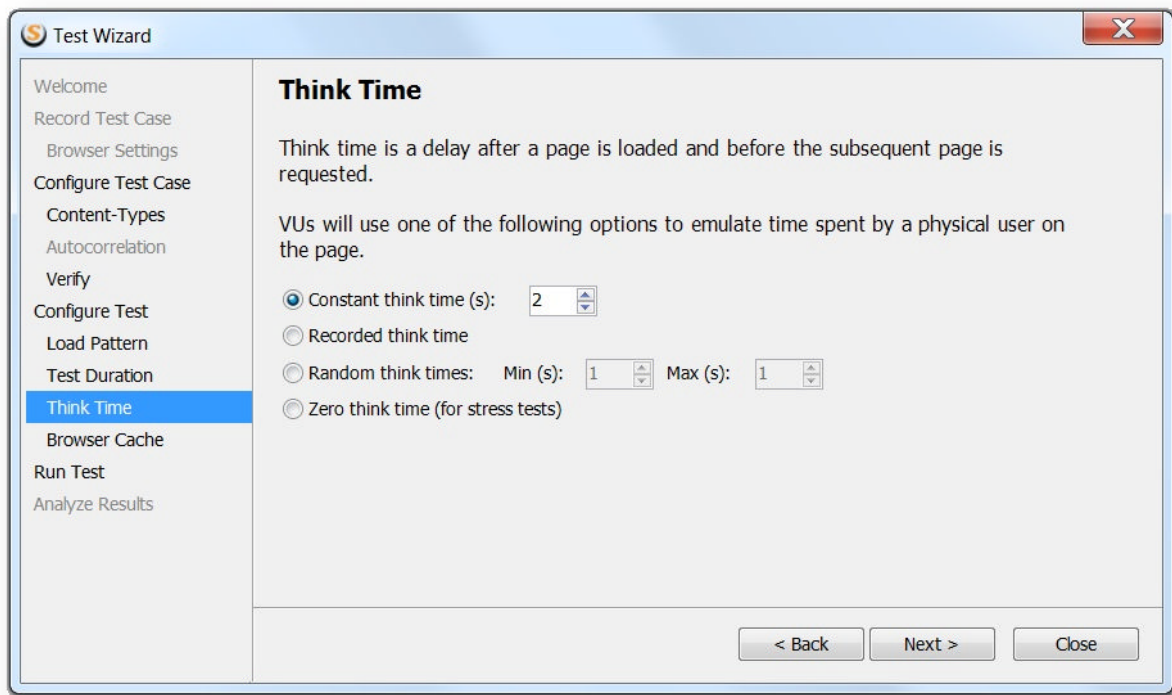
For more details about Load Pattern, see [Load Pattern](#)

3. Set the test completion criteria. After reaching this condition, the test will stop. The test can end after a certain number of iterations, certain amount of time, or when max VUs are reached in a step load patter. For more info on Duration click here. Click **Next** when finished.



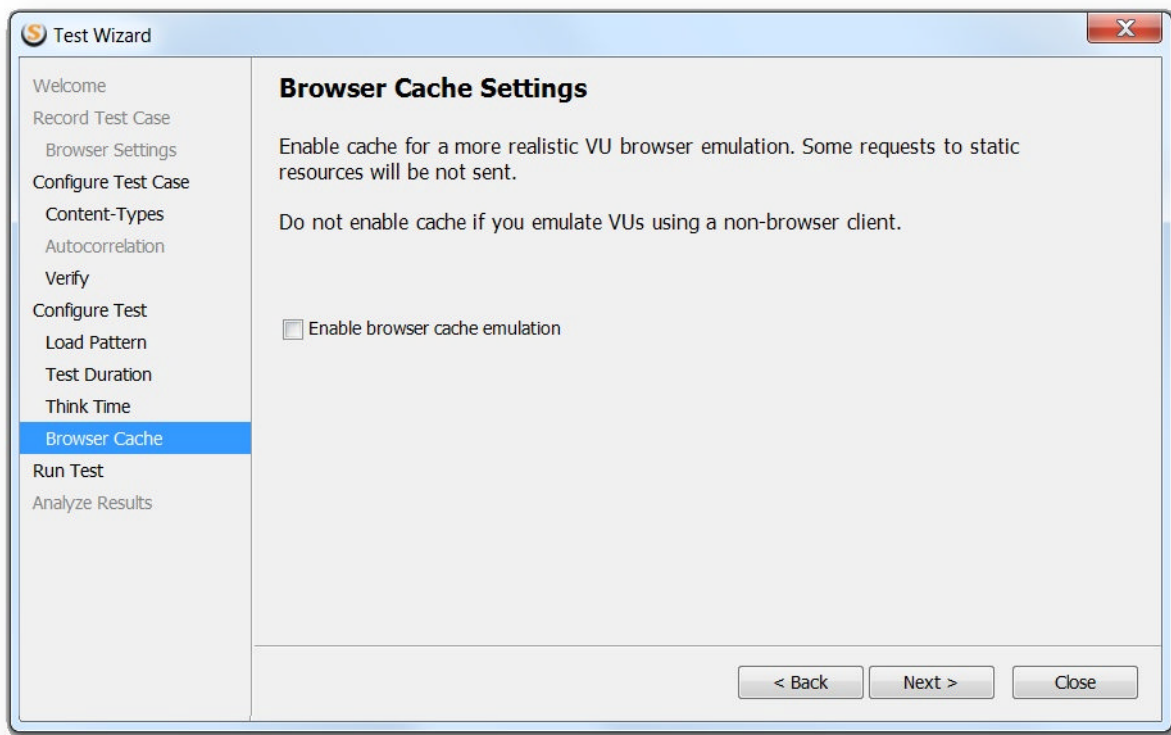
For more details about Test Duration, see [Test Duration](#)

4. Select think time option. Think time is a delay after a page is loaded and before the subsequent page is requested. VUs will use selected options to emulate time spent by a physical user on the page.



5. Set a desired browser cache option:

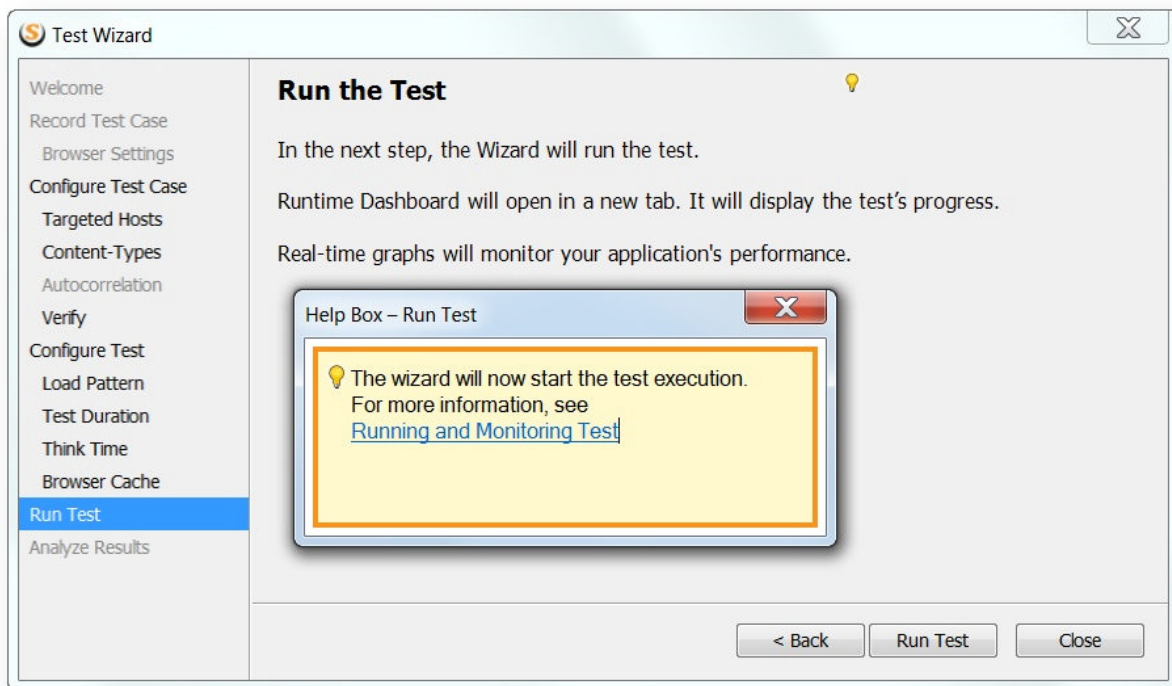
- Enable cache for a more realistic VU browser emulation. Some requests to static resources will be not sent.
- Do not enable cache if you emulate VUs using a non-browser client.



6. Click **Next** to start the load test.

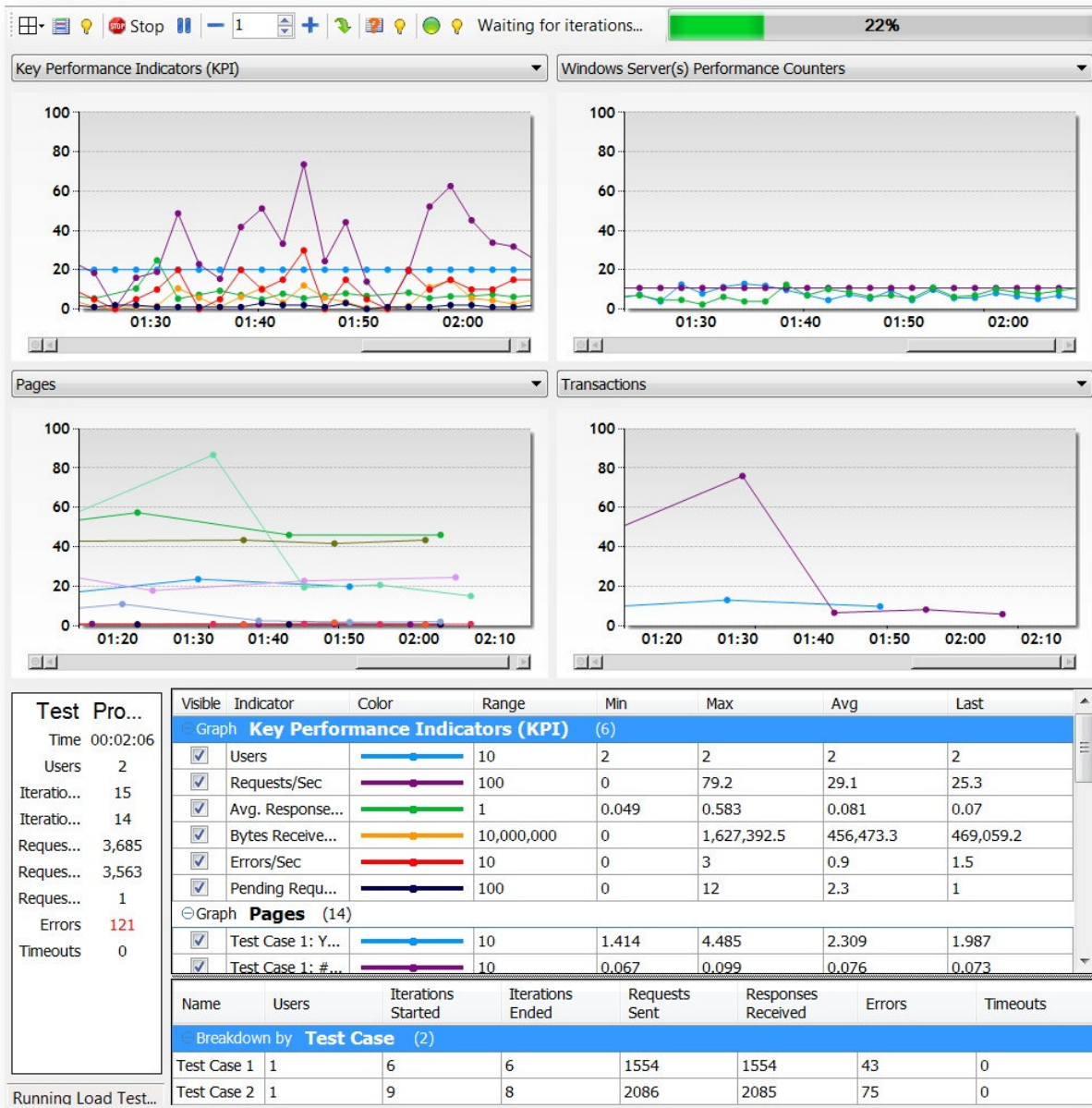
2.4 Running Test

Click **Run Test** to start the test.



The Runtime Dashboard will appear. It displays test progress information and performance metrics during the test's execution. Also, various performance parameters of the tested website in the following categories are monitored

- Key performance Indicators
- Server Performance counters
- Pages
- Transactions
- Test Cases



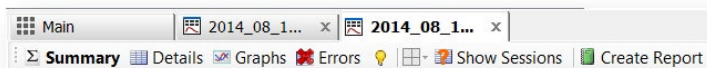
For more details about Runtime Dashboard, see [Runtime Dashboard](#).

2.5 Analyzing Results

Once the test is over, you can now view the test results. Click **Finish**.



Wizard will close and the [Test Result tab](#) will provide reach functionality to analyze various aspects of application performance. The following views of the test result that can be selected on the toolbar: [Summary View](#), [Detail View](#), [Graph View](#), and [Error View](#).



To generate a Load Test Reports in a portable HTML format, Click **Report** on the toolbar.

This concludes the creation of a simple test with Test Wizard. The [User Guide](#) describes how to create and analyze a load test of any complexity.